

INDIGENOUS LAND USE AGREEMENT

Indjalandji-Dhidhanu People / Ergon Energy ILUA



- Indjalandji-Dhidhanu People / Ergon Energy ILUA
- QUD6022/99 Waanyi Peoples determination (QC99/23)
- QUD6115/98 Bularnu Waluwarra & Wangkayujuru People #1 (QC97/5)
- QUD579/05 Kalkadoon People #4 determination (QC10/4)

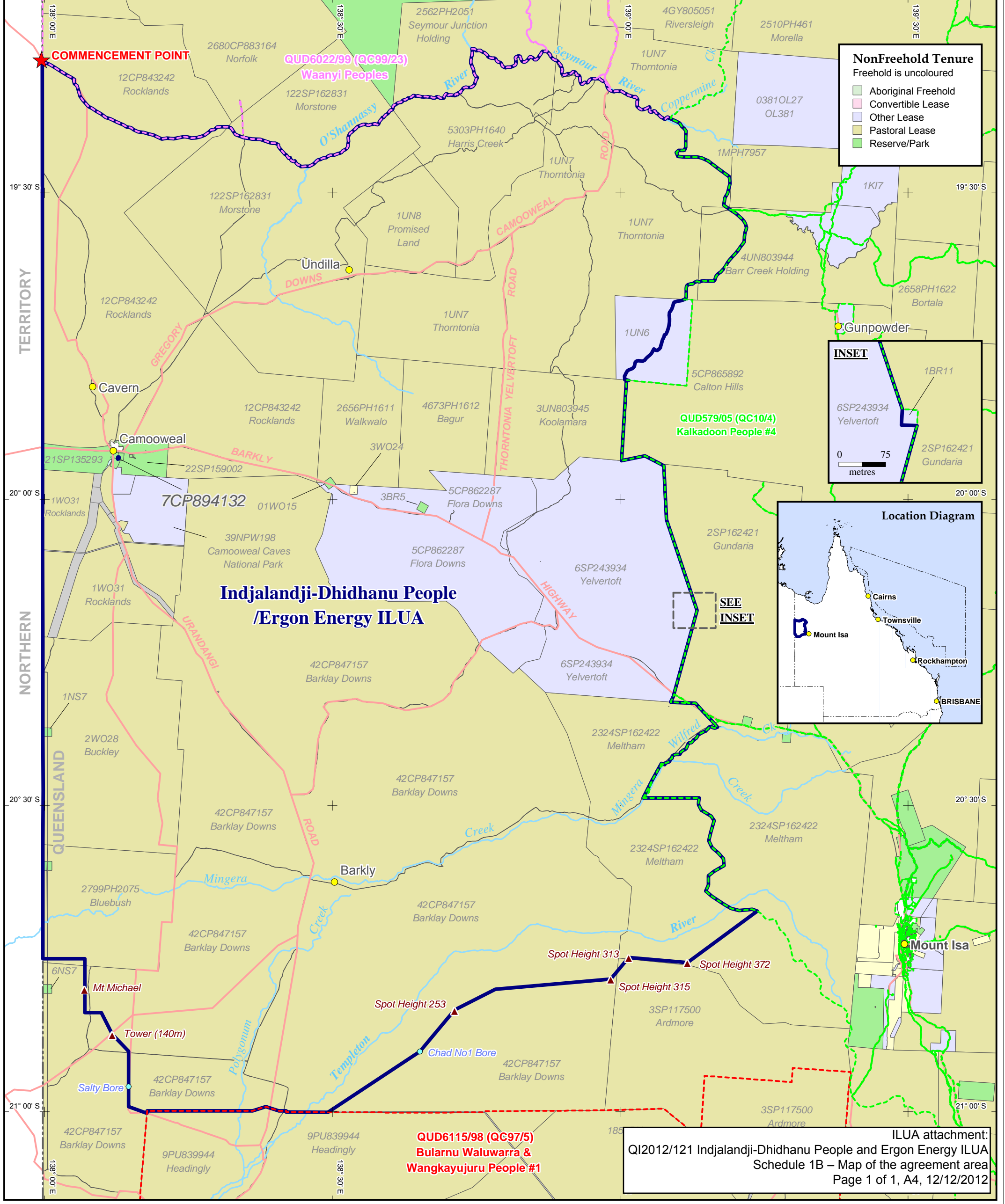


Latitude and Longitude based on Geocentric Datum of Australia 1994
Non Projection

© Commonwealth of Australia 2012

The Registrar, the National Native Title Tribunal and its staff, members and agents and the Commonwealth (collectively the Commonwealth) accept no liability and give no undertakings guarantees or warranties concerning the accuracy, completeness or fitness for purpose of the information provided. In return for you receiving this information you agree to release and indemnify the Commonwealth and third party data suppliers in respect of all claims, expenses, losses, damages and costs arising directly or indirectly from your use of the information and the use of the information you obtained by any third party.

Application boundary data compiled by the NNTT or sourced from DERM (Qld).
Cadastral data sourced from Department of Natural Resource and Mines, Qld (August 2012).
Topographic vector data is © Commonwealth of Australia (Geoscience Australia) 2003.
Map created by: Geospatial Services, National Native Title Tribunal (17/09/2012)



ILUA attachment:
QI2012/121 Indjalandji-Dhidhanu People and Ergon Energy ILUA
Schedule 1B – Map of the agreement area
Page 1 of 1, A4, 12/12/2012